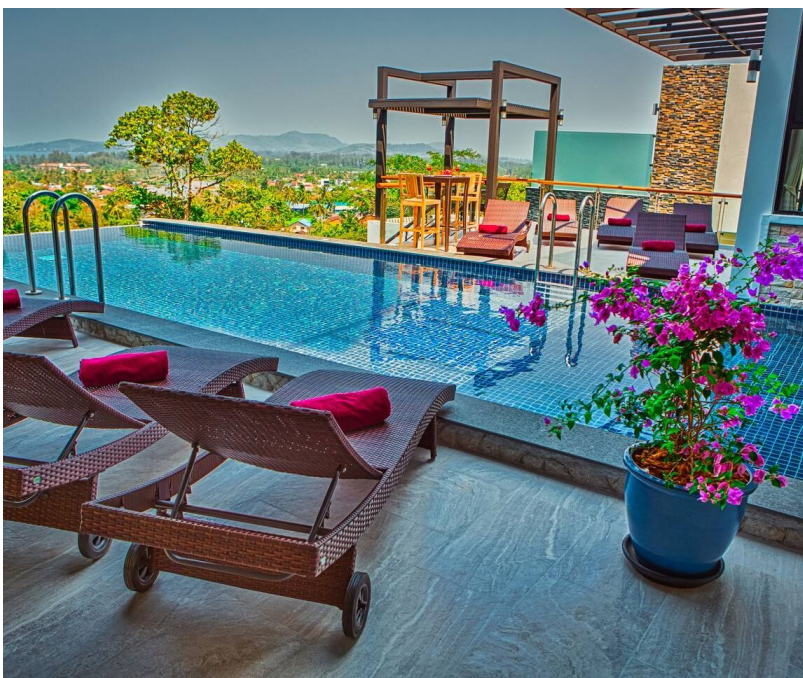




Impressive 6BR Villa with Saltwater Pool in Phuket

Choeng Thale Subdistrict, Phuket, Thailand

Haven N° 513068



The Experience

This fully serviced luxury 6-bedroom villa features spacious rooms, a private infinity saltwater pool, and breathtaking sea and valley views. It is located only 5-10 minutes' drive away to the scenic beaches of Surin & Bangtao. A private minivan with driver is available for transfers and hourly rentals.

Located 70 meters high on the hillside surrounded by lush tropical forest and natural waterfall, this villa provides breathtaking views over beautiful

valley of Phuket's Bang Tao area and Andaman sea.

Total area of the three-story villa is 1100 sq.m, including covered private parking and rooftop terrace. The villa consists of six bedrooms, seven bathrooms, two living rooms, a fully equipped modern open-style kitchen with a dining area and an outside dining terrace. All rooms have amazing views from their spacious balconies and terraces.

The modern, elegant design of the villa is able to satisfy travelers by creating a sense of inner harmony. Rooms are filled with handmade natural teak furniture. The walls are decorated with auction lithographs by Warhol, Miro, Picasso (each work is signed by the author), as well as paintings of the famous Thai painters. Huge mirrors reflect the most beautiful sunrises and sunsets in the world.

The infinity saltwater swimming pool with an integral hot tub and adjacent sundeck are perfect for a lazy day in the sun. Like a mountain waterfall, water from the pool falls down from a height of seven meters along the huge window of the ground floor bedroom's terrace. There are also rooftop terrace, which is perfect for sunset cocktail parties, barbeques, wedding ceremonies and yoga sessions.

Villa Layout

Level 4





- Rooftop terrace

Level 3

There are 3 bedrooms on this level, all featuring stunning views over the sea, Bangtao area and tropical rainforest from private balconies and terraces.

Light wood primary bedroom:

- Super King size bed, ensuite bathroom with shower and bathtub, separated dressing area with spacious wardrobe, refrigerator, kettle, 55' LCD TV with satellite channels, huge outdoor terrace with outdoor furniture and sun lounges.

Guest bedroom 1:

- Super King size bed, ensuite bathroom with shower and bathtub, separated dressing area with spacious wardrobe, refrigerator, kettle, 50' LCD TV with satellite channels, balcony with outdoor furniture.

Guest bedroom 2:

- Super King size bed, ensuite bathroom with shower, spacious wardrobe, refrigerator, kettle, 46' LCD TV with satellite channels, balcony with outdoor furniture.

Level 2

This level consists of fancy primary bedroom, guest bathroom, western kitchen, dining area, outdoor dining terrace, living room, swimming pool area.

Dark wood primary bedroom:

- Super King size bed, ensuite bathroom with shower and bathtub, separated dressing area with spacious wardrobe, refrigerator, kettle, 55' LCD TV with satellite channels, huge outdoor terrace with outdoor furniture and sun lounges.

Western Kitchen:

- Modern kitchen is fully equipped with huge refrigerator, ceramic stove, oven, dishwasher, professional coffee machine, toaster, microwave oven and all kitchen utensils.

Dining area:

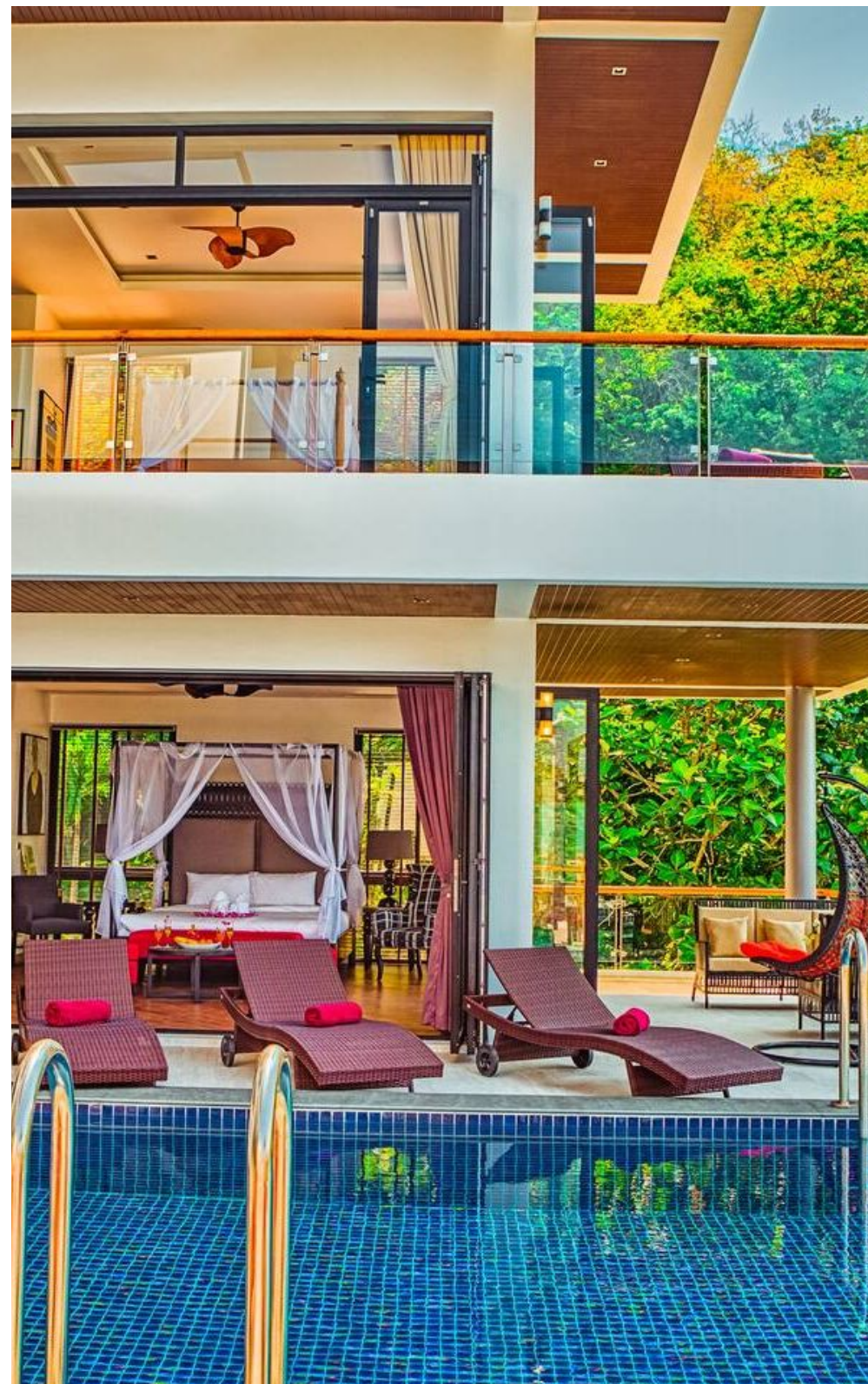
- Natural teak wood dining table for 12 people.

Outside dining area:

- Natural teak wood round dining table for 10 people.

Living room:

- 3 comfortable sofas, big coffee table , 75' LCD TV with





satellite channels, sound system.

Swimming pool and sun deck:

- Swimming pool with built-in jacuzzi, sundeck with sun lounges, separated dining area for 4 people.

Level 1

This level features separate living room and 2 guest bedrooms.

Living room:

- 2 comfortable sofas, 60' LCD TV with satellite channels, refrigerator, kettle, microwave oven.

Guest bedroom 1:

- Super King size bed, ensuite bathroom with shower, walk-in wardrobe, terrace with outdoor furniture.

Guest bedroom 2:

- Super King size bed, ensuite bathroom with shower, wardrobe, terrace with outdoor furniture.

Complimentary Amenities

-
- Roundtrip airport transfer
 - Shuttle bus to Bang-Tao or Surin Beach

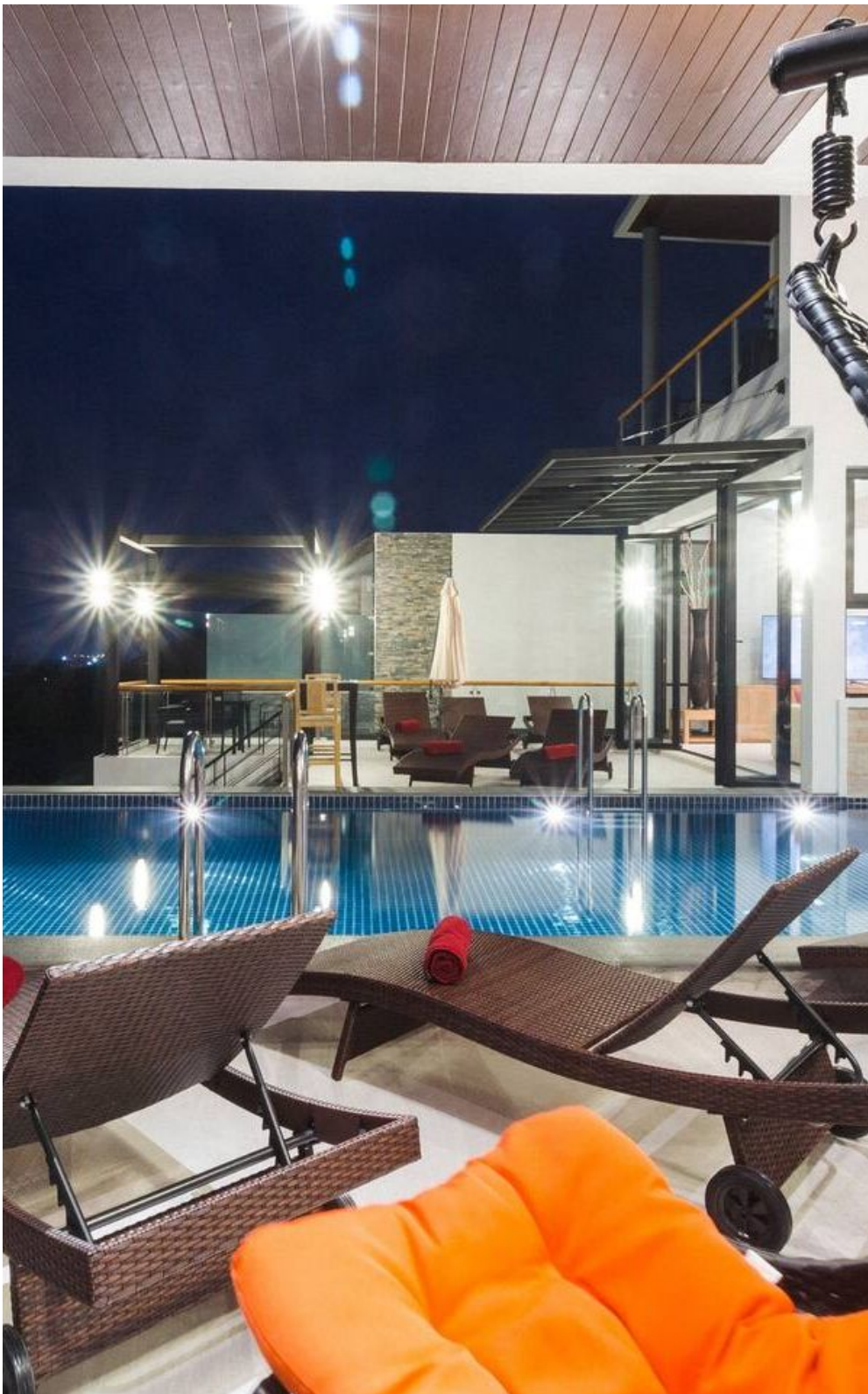
- American, Thai or Continental breakfast
- Cleaning - every day; change of bed sheets - once in three days
- Electricity and Water is included in the price
- The concierge manager is always at your service to arrange transfers, book exciting trips around the island and provide you with any possible help during your stay
- Free Wi-Fi access is available everywhere at the villa
- VIP daily membership discount cards of Catch Beach Club - most stylish contemporary beach club located at Bang Tao beach (5 min drive from the villa)

Special Services (Fees May Apply)

- The private chef can do your grocery shopping and cook lunch or dinner for you (price is 1500 Baht for up to 8 people, 2000 THB for 9 - 12 people, price does not include groceries)
- In-house massage from massage menu
- Quality tours and excursions from the best tour operators, private boat charters to the nearby islands, car rentals, transfers around the island at the best possible rates
- Food and drink delivery to the villa.

Villa staff consists of 6 people: villa manager, 2 housekeepers, chef, gardener, driver. The villa staff is at your service from 9 a.m. to 6 p.m. The concierge manager is at





your full disposal to ensure that your stay will be a memorable one.

Stunning Thailand Location

This villa is conveniently situated between the famous Surin and Bang Tao Beaches. It is in a quiet and safe location, yet all developed tourist infrastructure is within easy reach. There are plenty of very nice restaurants just a short drive from the villa.

- 3-5 Minutes drive to beautiful Surin beach
- 3 minutes drive to the Thai market (fresh seafood, fruits, vegetables)
- 5 min drive to Tesco Lotus shopping area (supermarket, shops, MacDonalds and Pizza Company, Doi Chaang coffee shop, Boots Pharmacy)
- 5 minutes drive to hidden picturesque Laem Sing beach
- 7 minutes drive to Boat Avenue area (European standard supermarket, pharmacy, the best cafes and restaurants to suit every budget and taste, banks, currency exchange offices, shops, beauty salons)
- 7 minutes drive to Bang Tao beach with Phuket most popular fashionable Catch beach Club
- 10 minutes to upscale Laguna area offering luxury spas, golf clubs, best restaurants serving delicious seafood and comfortable beach clubs
- 10 minutes to Kamala beach with its Asia famous

Fantasea show, stylish HQ beach club (new venue from the owners of world famous Catch Beach club) and world famous Café Del Mar

- 15 minutes drive to Wake park at the lake
- 20 minutes to Patong (the center of Phuket nightlife)
- 25 minutes drive from the airport

Please Note

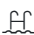


- Smoking is not allowed in the rooms, only outside.
- Check-in time: 15.00
- Check-out time: 12.00





Property Highlights

This property fits up to 14 guests with 6 bedrooms and 6.5 bathrooms.

- | | | |
|--|--|---|
|  Hot Tub |  Private Pool |  Rooftop Terrace |
|  Sea View |  Fully Staffed |  Dining Terrace |
|  Complimentary Breakfast Available |  Housekeeping Available |  Private Beach Club Access |

Inquire for more details



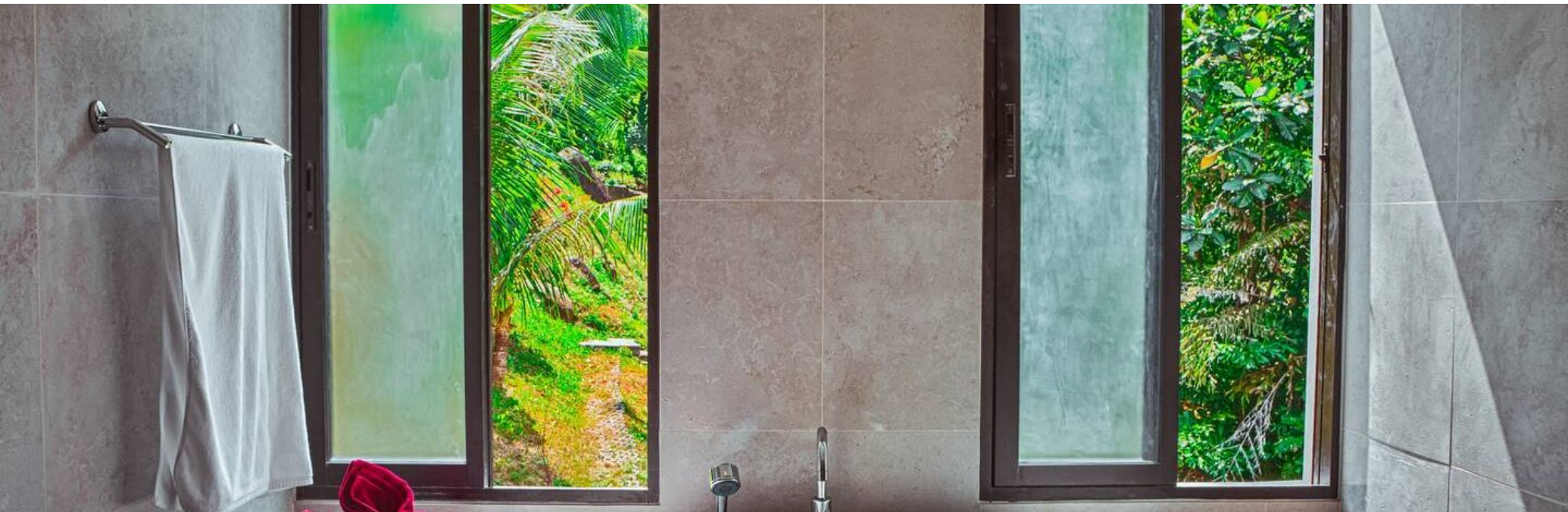


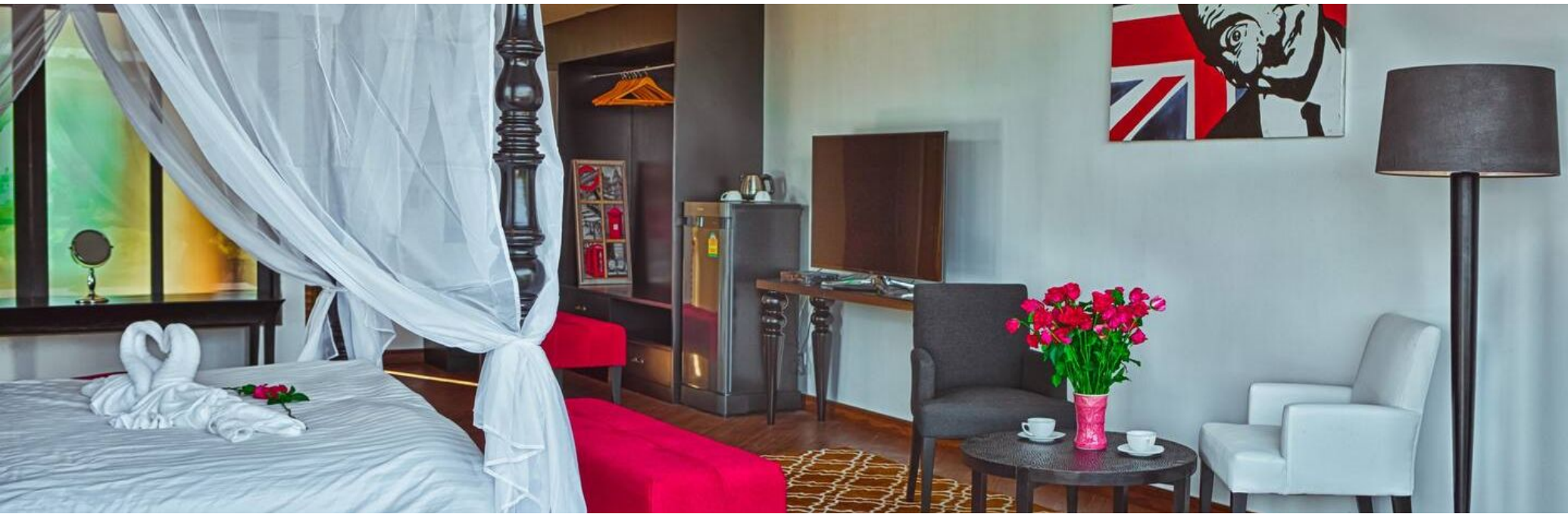










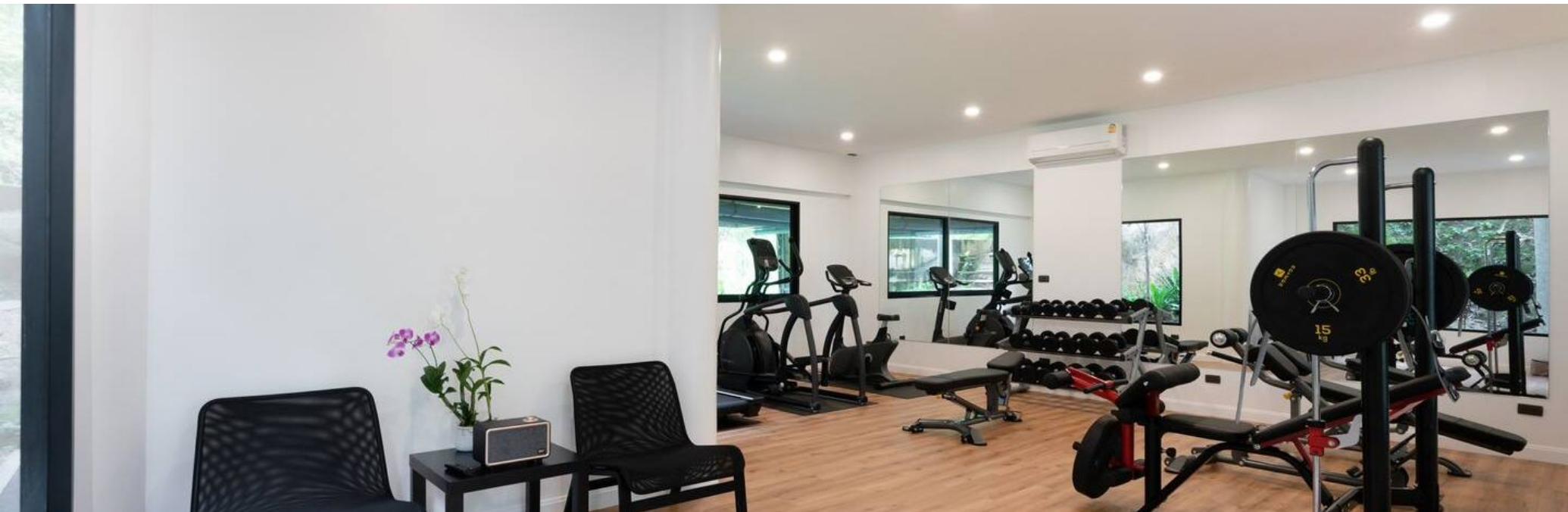


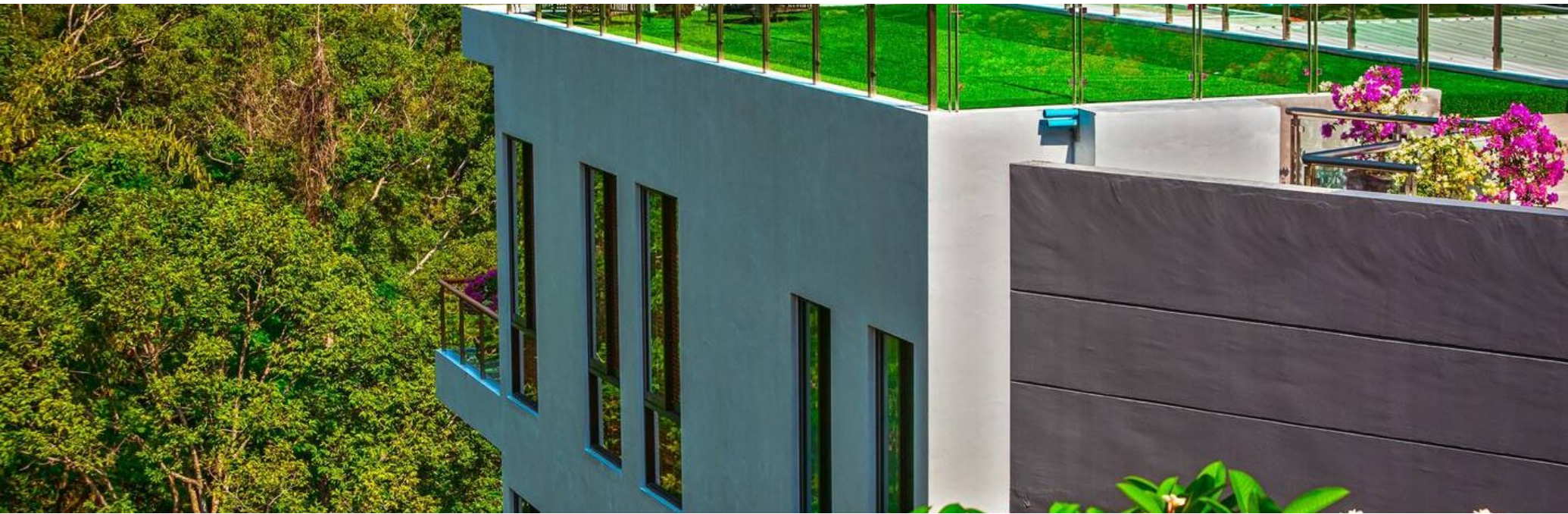








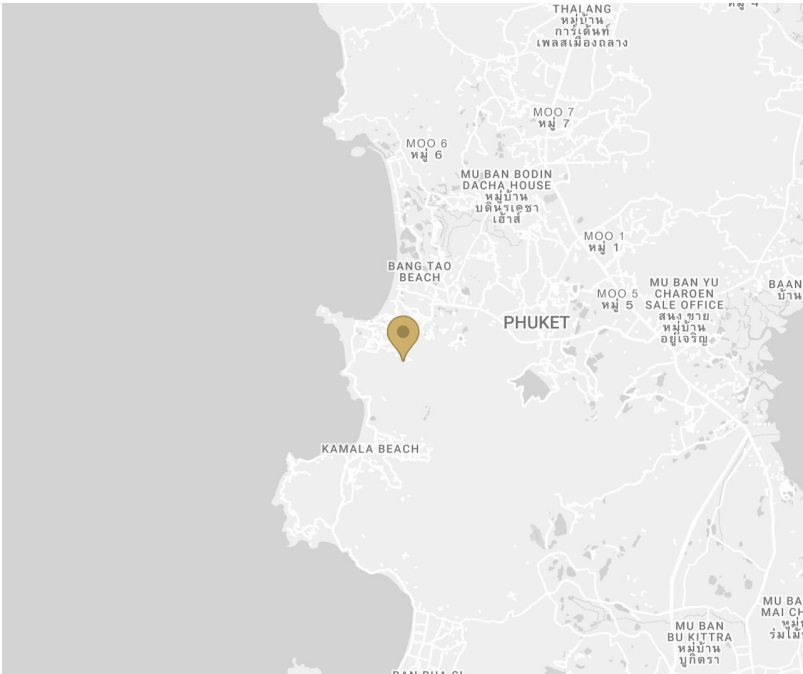






Location

Ideally situated in Choeng Thale Subdistrict, Phuket, Thailand, this beautiful luxury villa is a wonderful choice for your next getaway.





Find Your Haven

Contact your trip designer to learn more or book this haven.

POWERED BY HVN